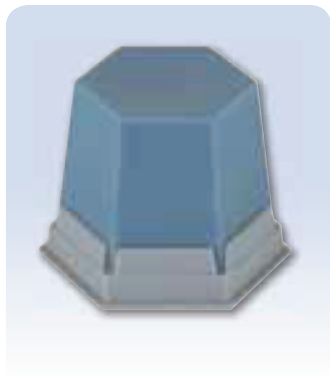


Model casting and special waxes

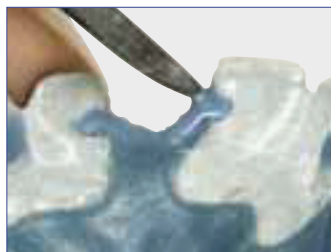
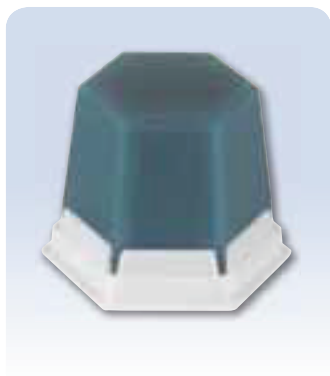


⚠ GEO **Cast Model Modelling wax** **hard/opaque**

For modelling cast model sections on the investment model.

- wax composition is precisely matched to preformed wax clasps.
- optimum modelling of occlusal surfaces or sharp seals.

Description	Art. No.
GEO cast model modelling wax, hard, turquoise opaque, 75 g	649-1000



⚠ GEO **Cast Model Modelling wax** **standard/transparent**

For modelling cast model sections on the investment model.

- wax precisely matched to preformed wax clasps.
- for bonding clasps, wax patterns or retainers.
- slightly transparent to recognize markings.

Description	Art. No.
GEO cast model modelling wax, standard, turquoise transparent, 75 g	649-0000

Burns without residue



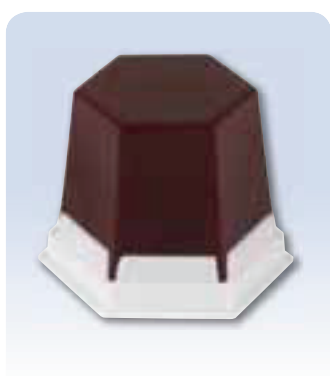
⚠ GEO **Undercut wax**

This wax is suitable for blocking undercuts, cavities or errors on plaster models for both model casting and crown and bridge techniques.

- excellent adhesion to plaster model.
- soft flow in the smallest areas.
- excellent carving properties.

- high melting point of 86°C (186°F) prevents change in dimensions during heat load (e.g. when duplicating).
- even thin layers can be easily recognised due to high opacity.

Description	Art. No.
GEO undercut wax, pink, opaque, 75 g	650-0000



⚠ GEO **Cervical wax**

Non-rebounding wax for forming crown margin.

- low shrinkage.
- particularly stable.
- precise and very thin application at the preparation border.

- excellent carving properties.
- burns without residue.

Description	Colour	Art. No.
GEO Cervical wax, 75 g	red-transparent	486-1000